



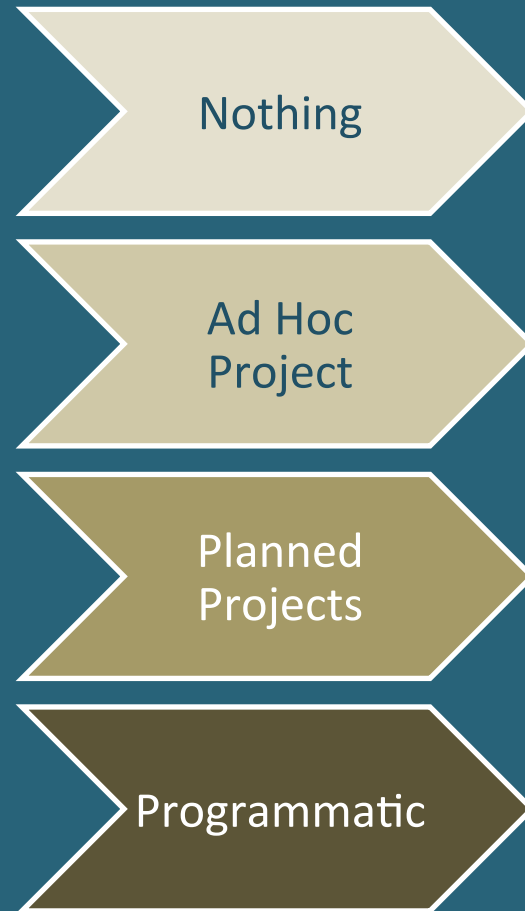
# ISO 50001 isn't the Goal. It's the Launching Point

Chad Gilless

Stillwater Energy (formerly w/ EnerNOC)



# Energy management sophistication levels



Examples of what happens after the

# LAUNCHING POINT



## COLOUR TEMPERATURE (Kelvin (deg K))

is the source 'warm' or 'cool'. These LEDs are 5000K

## LUMENS

The amount of light coming from a source

## LAMP LIFE

Represents the number of hours before the lamp is at half its original brightness

## CRI, the Colour Rendering Index

How 'true' is the color of the object being observed

## Foot-Candles

Describes how much light falls on a surface





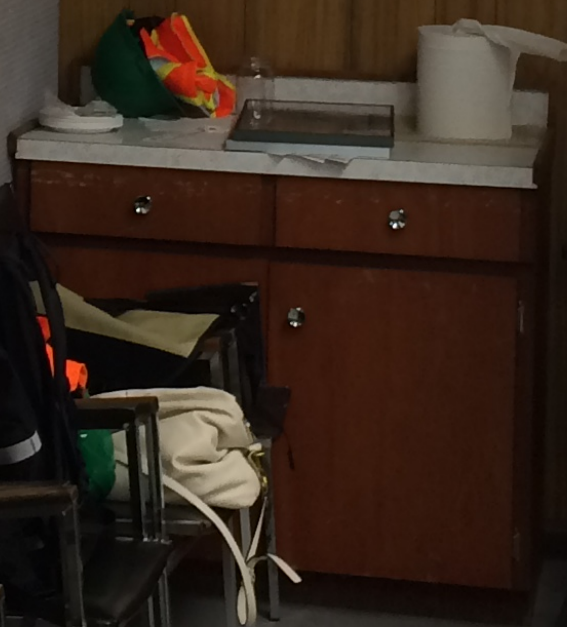
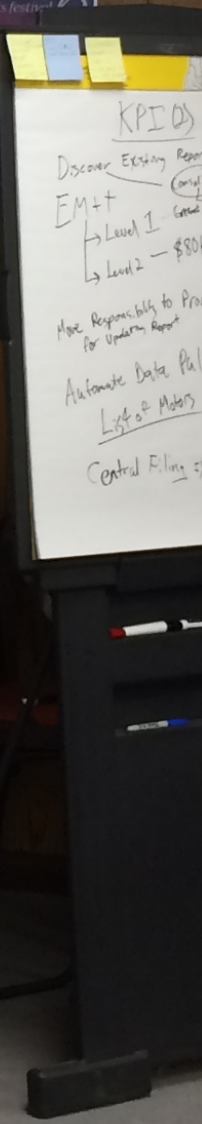
Facility-wide

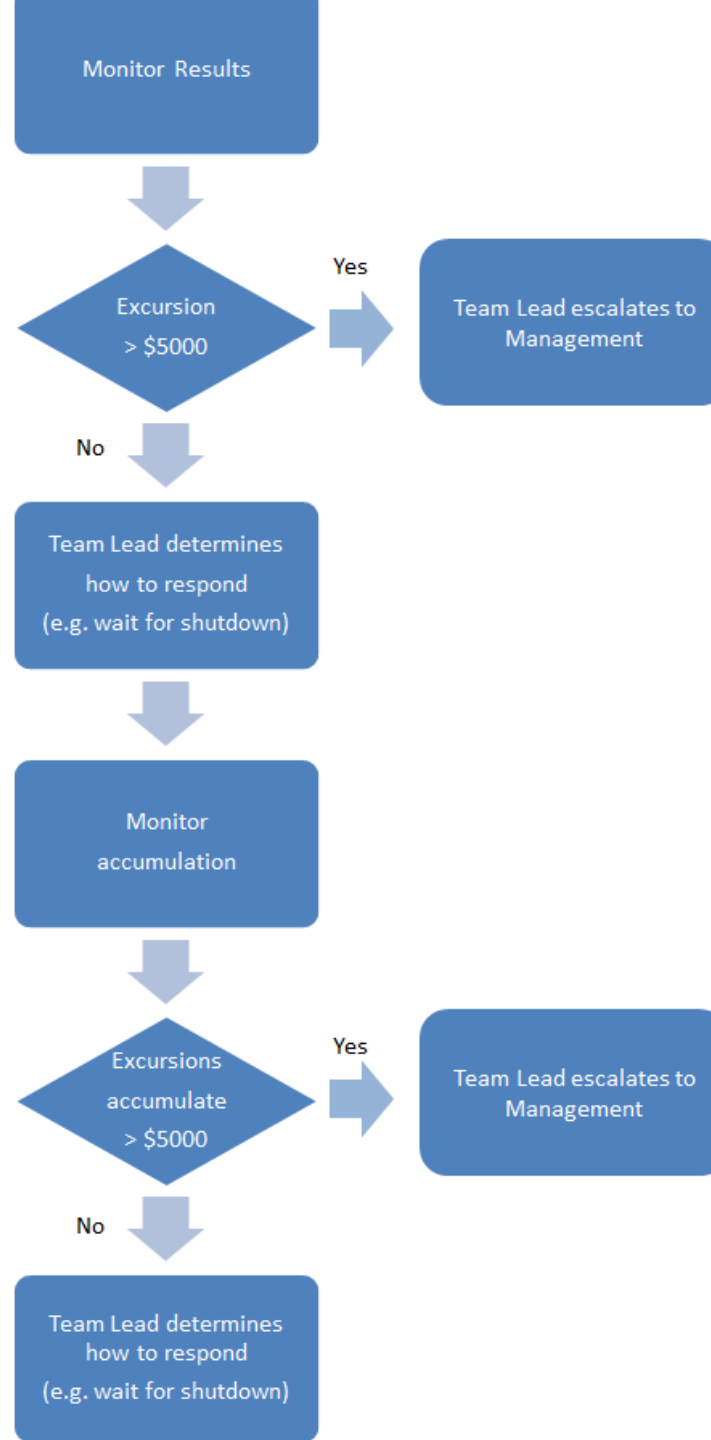
Energy Army

Energy Team

SMT











# Thank You

Chad GILLESS, C.E.M.  
Principal, Stillwater Energy, L.L.C.