

Is 1+1 more than 2?

The German-Japanese Energy Transition Council (GJETC), a role model for bi-national cooperation

Authors

Stefan Thomas
Peter Hennicke
Naomi Gericke

Wuppertal Institute for
Climate, Environment and Energy

Wilhelm Meemken

ECOS Consult

Masakazu Toyoda

Ichiro Kutani

Hisashi hoshi

The Institute of Energy Economics, Japan

Contact

stefan.thomas@wupperinst.org

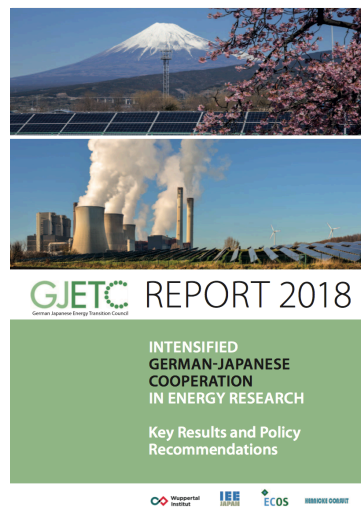
INTRODUCTION



- Japan and Germany have to master similar challenges: achieving a sustainable and climate-neutral energy system
- The GJETC - a non-governmental initiative for a bi-national expert council
- Established for two years initially (2016 to 2018), now in second phase (2018 to 2020)
- Despite different starting points, national energy transition can be more successful, if both countries learn from their mutual strengths and avoid weaknesses
- => not only double success, but also blue prints for other countries?**

WORK AND RESULTS TO DATE

- 2 meetings a year
- stakeholder workshops
- outreach events
- 4 studies in 1st phase:
 - (1) comparing scenarios,
 - (2) strategies and socio-cultural aspects,
 - (3) electricity market actors and design,
 - (4) energy efficiency
- 2 studies in 2nd phase:
 - (1) digitalization and
 - (2) hydrogen
- GJETC report 2018 with joint 15 KEY RECOMMENDATIONS



2030 targets

Country	Germany	Japan
Energy savings vs. 2010	30%	ca. 15%
Renewables in electricity	65%	22-24%
Nuclear in electricity	0%	20-22%

Some results:

despite differences in energy targets, agreement on key recommendations

Key recommendations

(1) Germany and Japan should work together on the 'man-to-the-moon-challenge' of a carbon-neutral energy system.

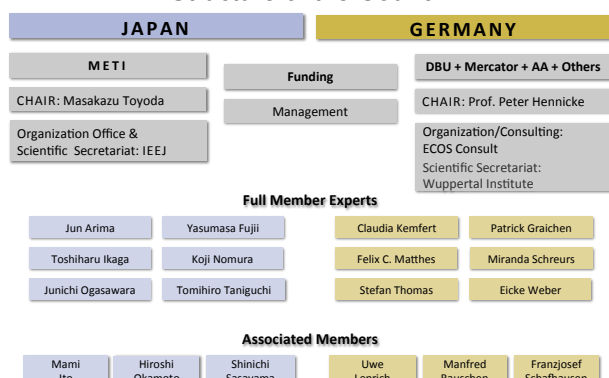
Key recommendations -

Agreement to need/promote i.a.:
(2) Thorough analysis & monitoring
(3) Renewable energy sources
(4) Energy efficiency & (7) sufficiency
(5) Restructuring and (9) decentralization
(10) Targets/goals, strategies and policies

www.gjetc.org

WHY A ROLE MODEL?

Structure of the Council



- Close to policymaking but **scientifically independent**
- Critical dialogue on **controversial topics** going beyond the scope of the usual diplomatic search for consensus
- Continuity and research depth** of the work going beyond ad-hoc events of both policy dialogues and economic contacts
- Publication and **wide communication** of all research results
- Development and deepening of personal networks with the **energy research landscape** in both countries
- Including relevant stakeholders by their answers to the GJETC questionnaire and the discussions at the **stakeholder dialogues**
- => a role model for cooperation on energy and low-carbon transitions in many countries