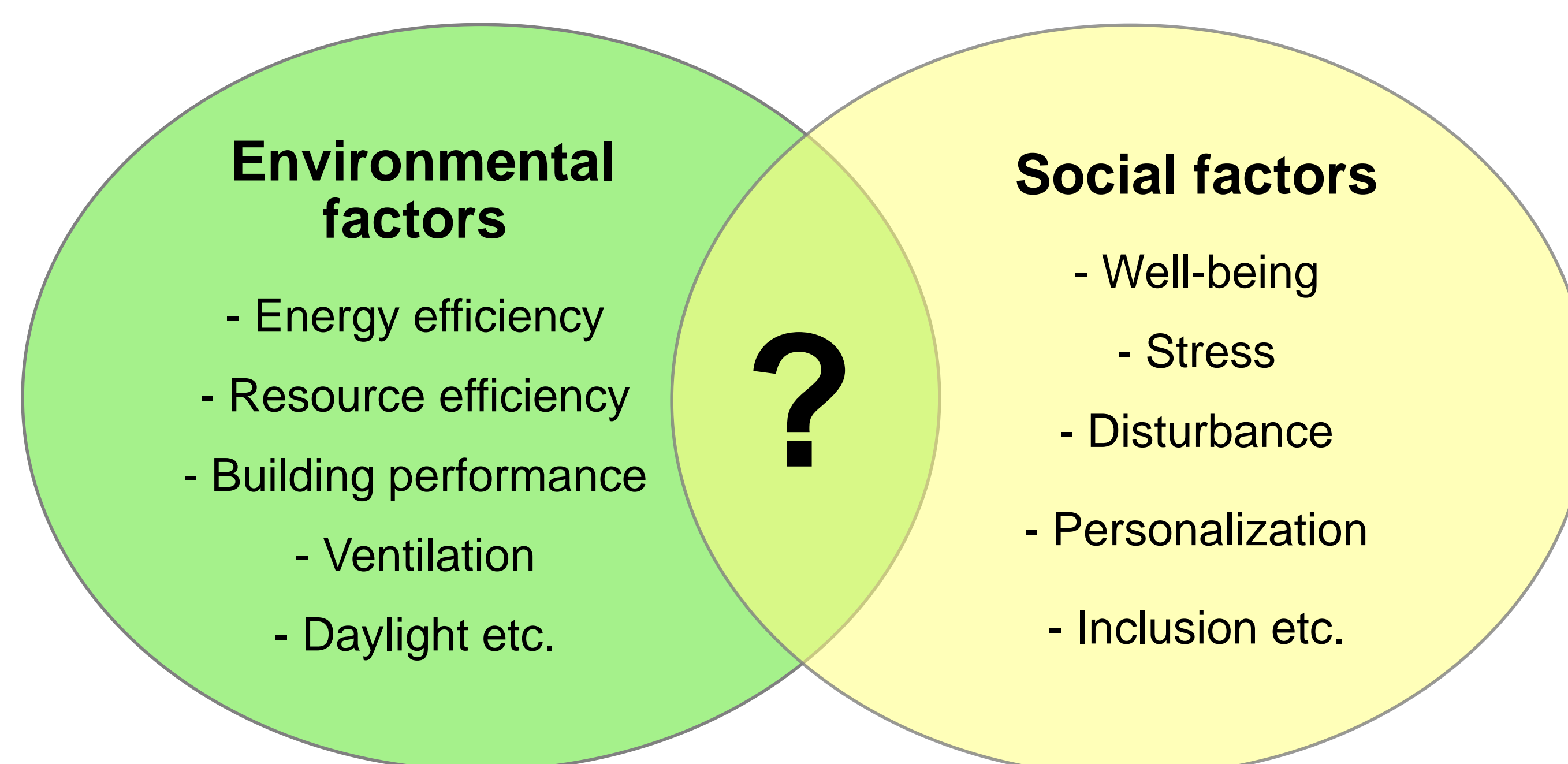




# Activity-based offices: synergies and trade-offs between energy efficiency and employees' work environment

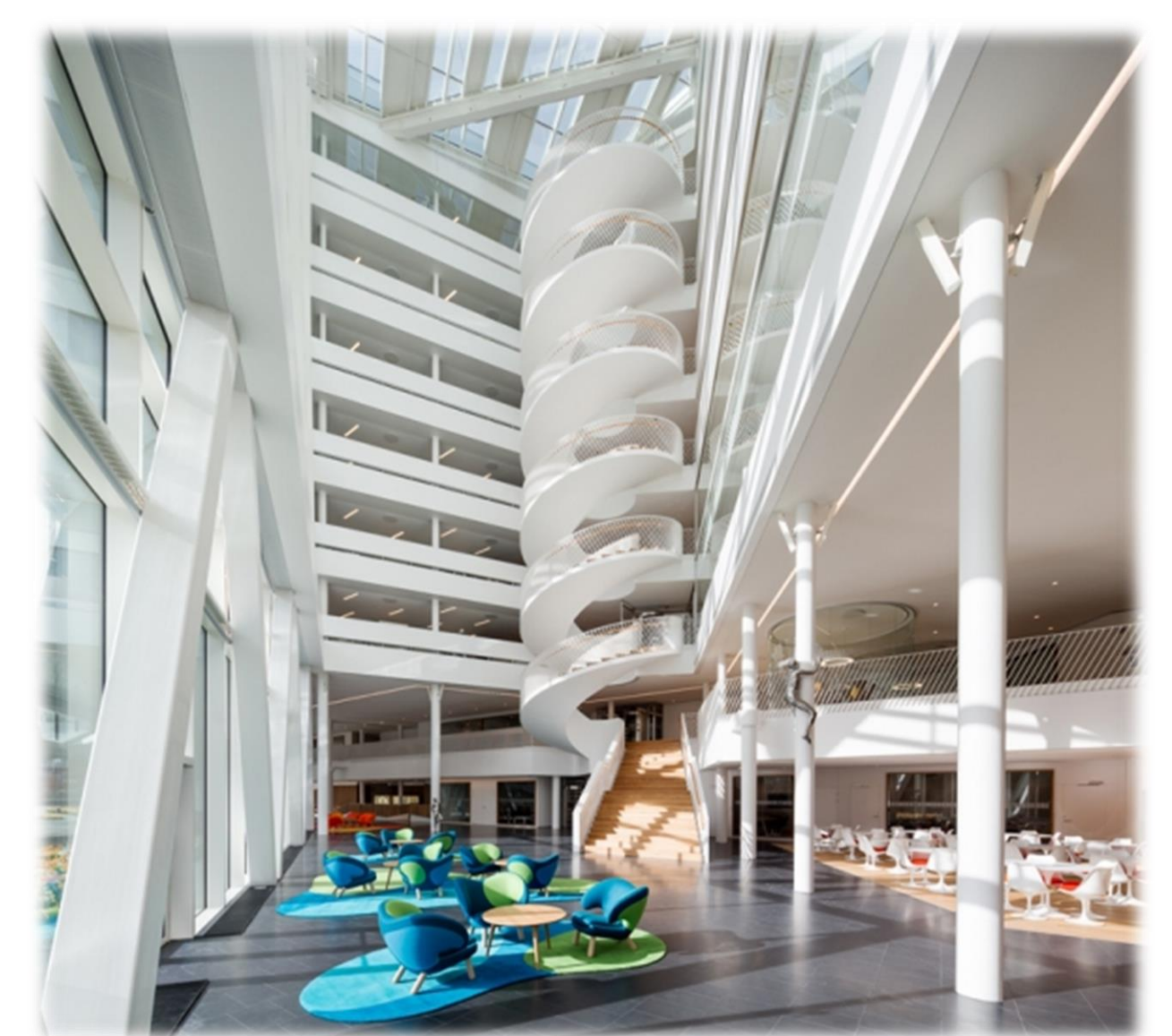
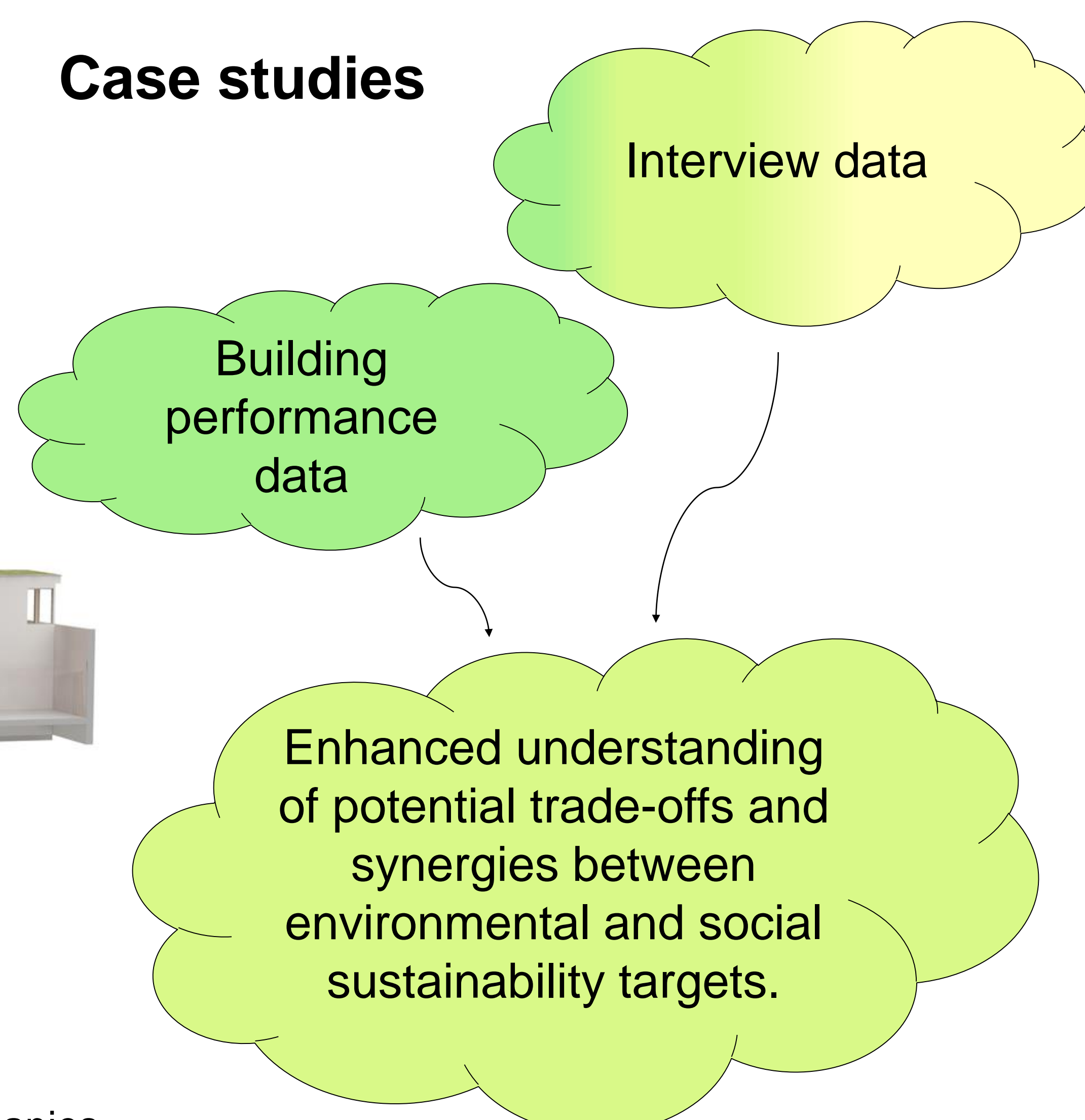
M. Boork, C. Katzeff

This ongoing Swedish research project explores the consequences of energy efficient office buildings on the employees' work environment based on case studies and literature.



*How do factors concerning the social aspects of the work environment and factors related to energy efficiency interact and counteract at the activity-based office workplace?*

## Case studies



### Case study A

- Real estate company
- New-built office building (2019)
- 130 employees
- Shared spaces with innovation companies
- Building data collected, primarily for innovation

### Case study B

- Bank head office
- Moved in 2014
- 2 500 employees, increasing
- Building data collected

The study is financially supported by



**Contact**  
 Magdalena Boork  
[magdalena.boork@stuns.se](mailto:magdalena.boork@stuns.se)  
 Cecilia Katzeff  
[ckatzeff@kth.se](mailto:ckatzeff@kth.se)  
 Maria Håkansson  
[maria.hakansson@ri.se](mailto:maria.hakansson@ri.se)