

**DEUTSCHLAND
MACHT'S
EFFIZIENT.**



Nationale
TOP-RUNNER-INITIATIVE
Produkte, die Ihre Energie sparen.

The EU product database for energy labelling (EPREL)

Introduction to the most important functions

Anton Berwald, Fraunhofer IZM | 04. June 2019

www.machts-effizient.de/ntri

 **Fraunhofer**
IZM

On behalf of the German Federal Ministry
for Economic Affairs and Energy

Copyright: Jürgen
Fäthle – fotolia

Agenda

- Introduction
- Background of the European product database for energy labelling
- Current technical implementation status
- Demo
- Preliminary conclusion
- Q&A

- Fraunhofer Institute for Reliability and Microintegration (IZM)
 - Founded in 1993 (Berlin), 233 employees, 30 Mio. EUR turnover (2017)
 - 4 Departments:
 - Wafer Level System Integration
 - System Integration & Interconnection Technologies
 - RF & Smart Sensor Systems
 - **Environmental & Reliability Engineering**
 - Environmental group: >20 years of experience in eco-design and life-cycle analysis (LCA)
 - Trends: Circular Economy, resource efficiency, product obsolescence
-

National Top-Runner Initiative (NTRI)



- Initiated by the German Federal Ministry for Economic Affairs and Energy (2016)
- Goal: Support market penetration of energy-efficient and high-quality appliances and motivate consumers to switch to more economical appliances.
- Main activities in the last three years:
 - Information campaigns for consumers
 - Training and information offers as well as PoS retail activities
 - Innovation processes for manufacturers
 - Exchanges with stakeholders
 - **Follow the implementation process of EPREL**

Background

History of the EU product database

- Similar databases already mandatory in some other countries (similar energy label)
- First proposal by the EC on 15.7.2015

Legal basis: EU Framework Regulation 2017/1369

- Replacement of EU Directive 2010/30
- Creation of an EU database for all energy-related products
- Since 01.01.2019: Requirement for suppliers to enter data in EPREL

Purpose of the EU product database

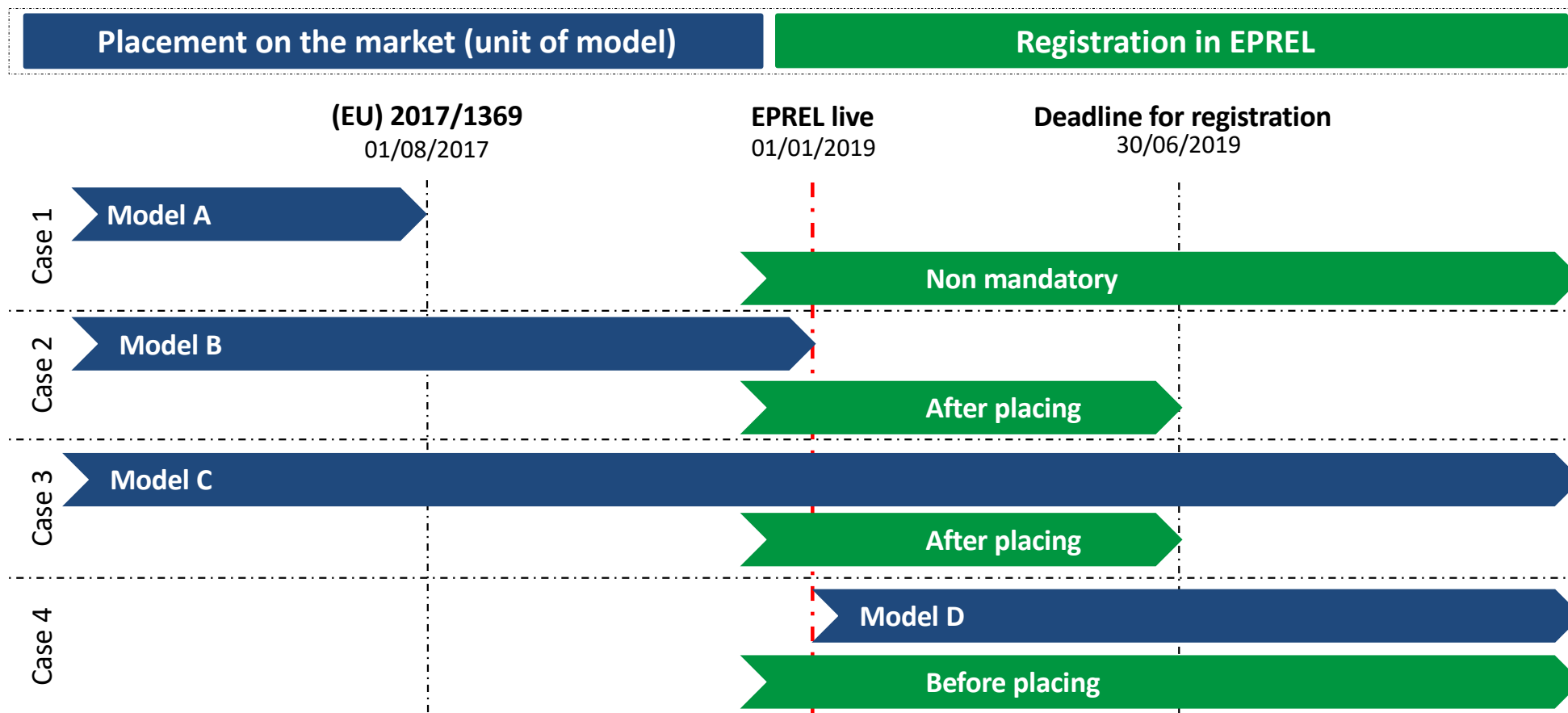
Article 12 (2) of Regulation (EU) 2017/1369

- 1. Support market surveillance authorities** in carrying out their tasks.
- 2. Provide the public with information** about products placed on the market and their energy labels, and product information sheets.
- 3. Provide the Commission with up-to-date energy efficiency information** for products for reviewing energy labels.

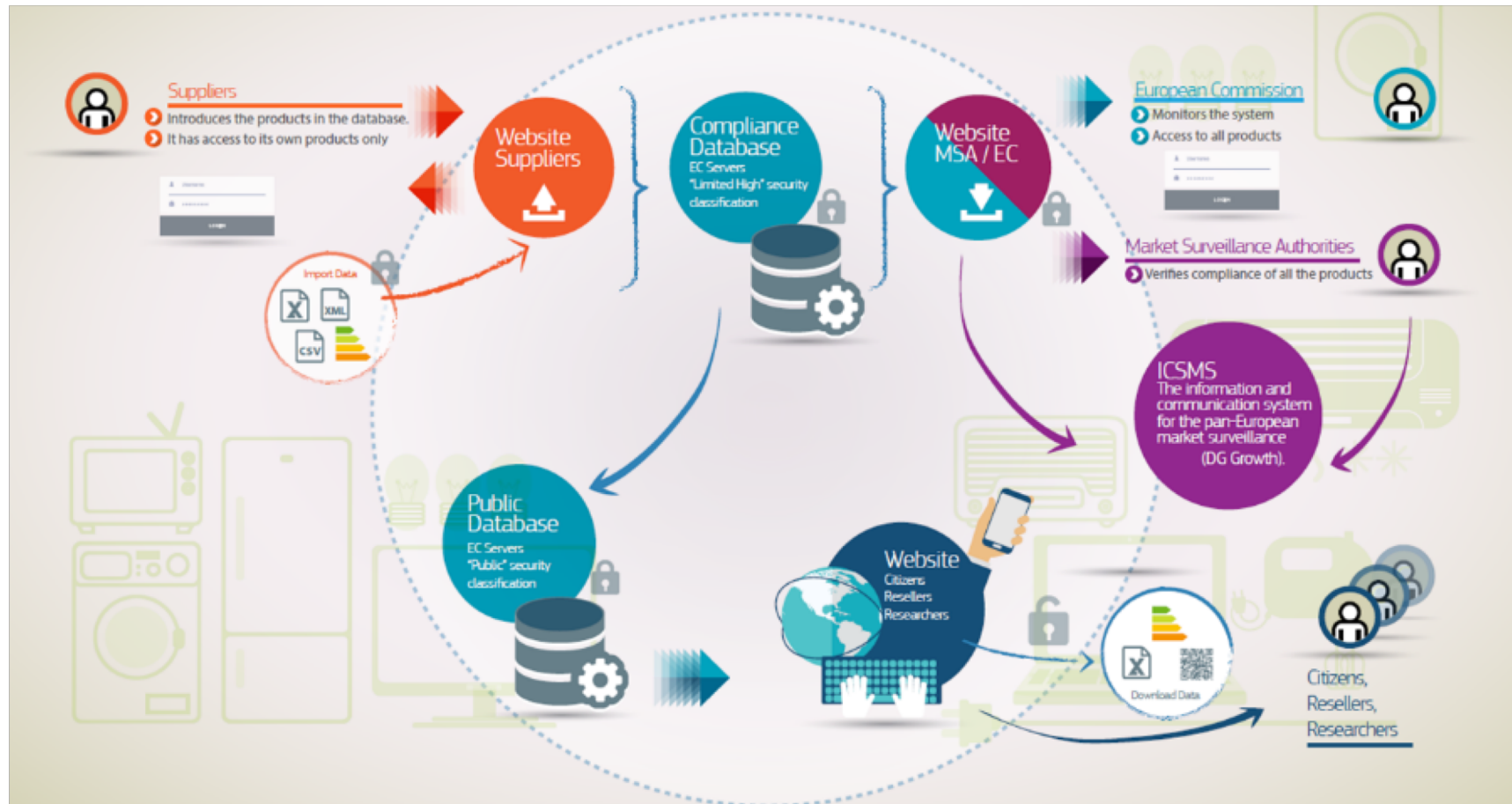
Product groups

#	Product group	#	Product group
1	Air conditioners	13	Solid fuel boilers
2	Domestic ovens	14	Packages of solid fuel boilers
3	Range hoods	15	Local space heaters
4	Electrical lamps	16	Space heaters/Combination heaters
5	Televisions	17	Packages of space heaters/Combination heaters
6	Household combined washer-driers	18	Temperature controls for space heaters
7	Household dishwashers	19	Solar devices for space heaters
8	Household refrigerating appliances	20	Water heaters
9	Household tumble driers	21	Packages of water heaters
10	Household washing machines	22	Hot water storage tanks for water heaters
11	Professional refrigerated storage cabinets	23	Solar devices for water heaters
12	Residential ventilation units	24	Vacuum Cleaners (no label since January 2019)

Registration of products



Structure of the data base



Source: European Commission (April 2017)

Information to be entered in EPREL

Public part (Annex I, 1)	Compliance part (Annex I, 3)
Name or trademark, address, contact details and other legal identification of the supplier	Model identifier of all equivalent models already placed on the market
Model identifier	Technical documentation as specified in Article 12(5): (a) general description of the model, sufficient for it to be unequivocally and easily identified; (b) references to the harmonised standards applied or other measurement standards used; (c) specific precautions that shall be taken when the model is assembled, installed, maintained or tested; (d) the measured technical parameters of the model; (e) the calculations performed with the measured parameters; (f) testing conditions if not described sufficiently in point (b).
Label in electronic format	
Energy efficiency class(es) and other parameters of the label	
Parameters of the product information sheet in electronic format	
	In addition, the supplier may upload additional parts of the technical documentation on a voluntary basis into the database.

Information to be entered in EPREL

Public part (Annex I, 1)

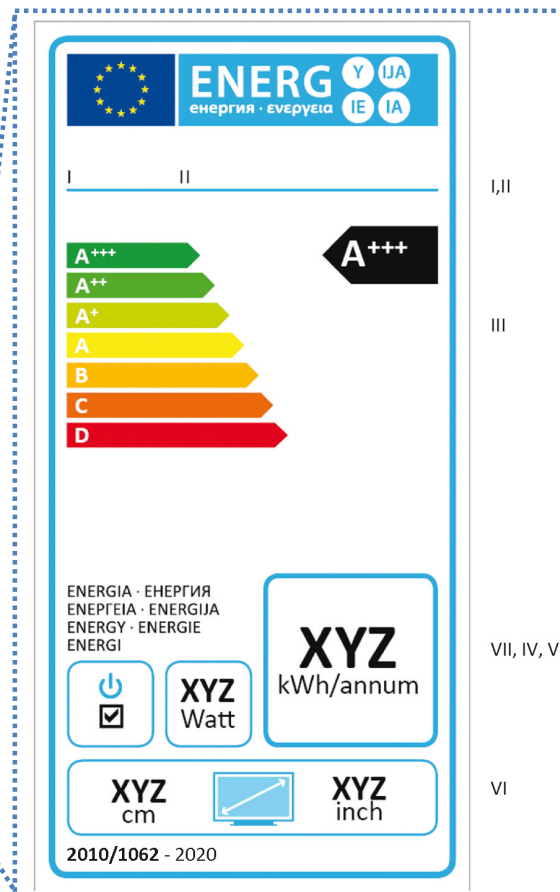
Name or trademark, address, contact details and other legal identification of the supplier

Model identifier

Label in electronic format

Energy efficiency class(es) and other parameters of the label

Parameters of the product information sheet in electronic format



Information to be entered in EPREL

Public part (Annex I, 1)

Name or trademark, address, contact details and other legal identification of the supplier

Model identifier

Label in electronic format

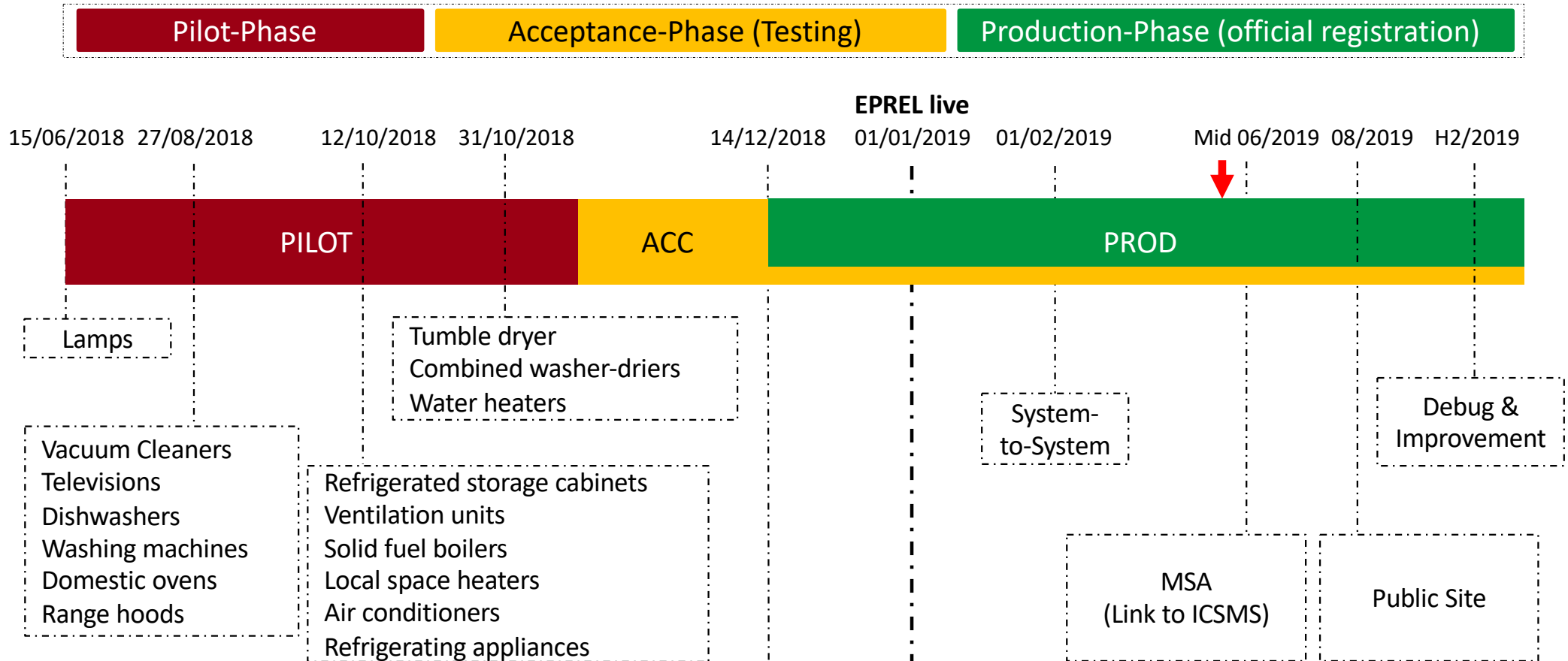
Energy efficiency class(es) and other parameters of the label

Parameters of the product information sheet in electronic format

Product fiche

1. The information in the product fiche of the television shall be provided in the following order, and shall be included in the product brochure or other literature provided with the product:
 - (a) supplier's name or trade mark;
 - (b) supplier's model identifier; where model identifier means the code, usually alphanumeric, which distinguishes a specific television model from other models of the same trade mark or supplier's name;
 - (c) the energy efficiency class of the model in accordance with Annex I, Table 1; where the television has been awarded an 'EU Ecolabel' under Regulation (EC) No 66/2010 of the European Parliament and of the Council (1), this information may be included;
 - (d) the visible screen diagonal in centimetres and in inches;
 - (e) the on-mode power consumption measured in accordance with the procedure set out in Annex VII;
 - (f) the annual energy consumption calculated in accordance with Annex II in kWh per year, rounded to the first integer; it shall be described as: 'Energy consumption XYZ kWh per year, based on the power consumption of the television operating 4 hours per day for 365 days. The actual energy consumption will depend on how the television is used.';
 - (g) the standby and off-mode power consumption or both measured in accordance with the procedure set out in Annex VII;
 - (h) the screen resolution in physical horizontal and vertical pixel count.

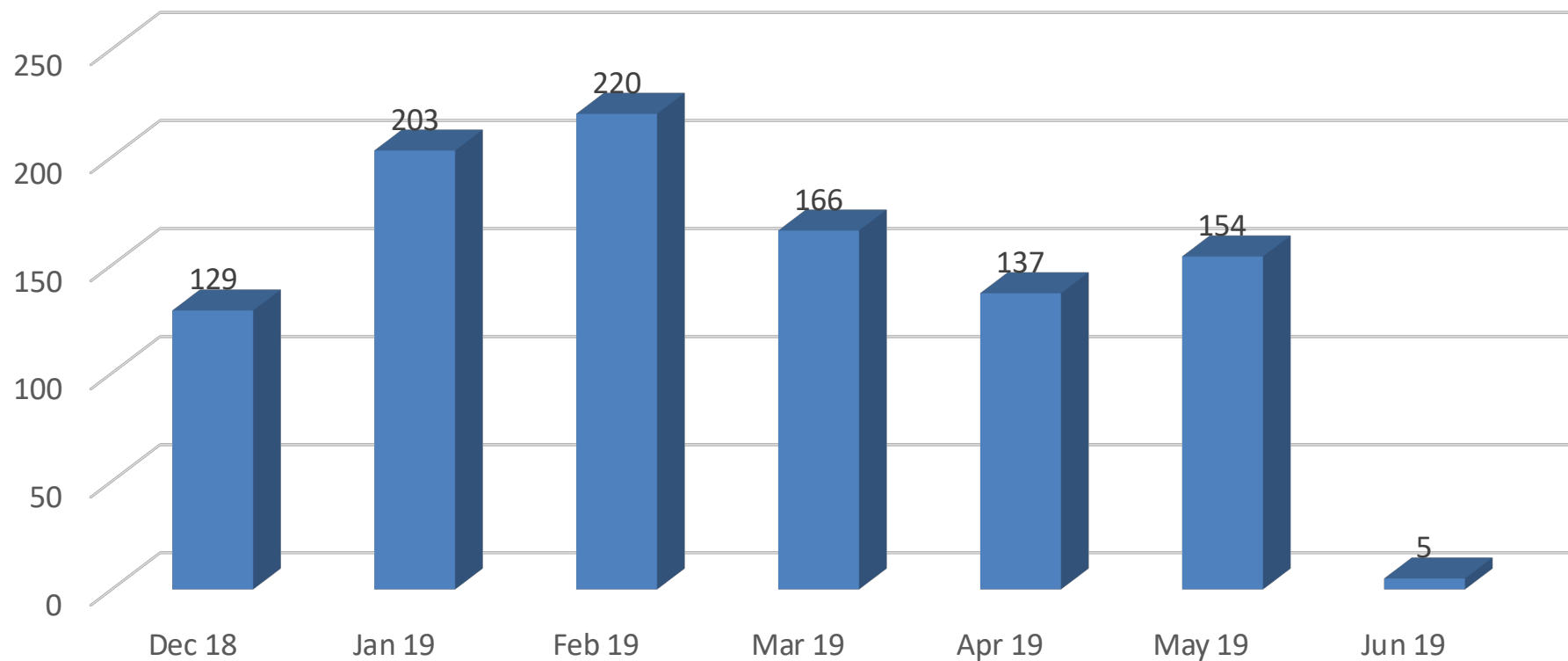
Current state of implementation



Current state of implementation

Total: 1014

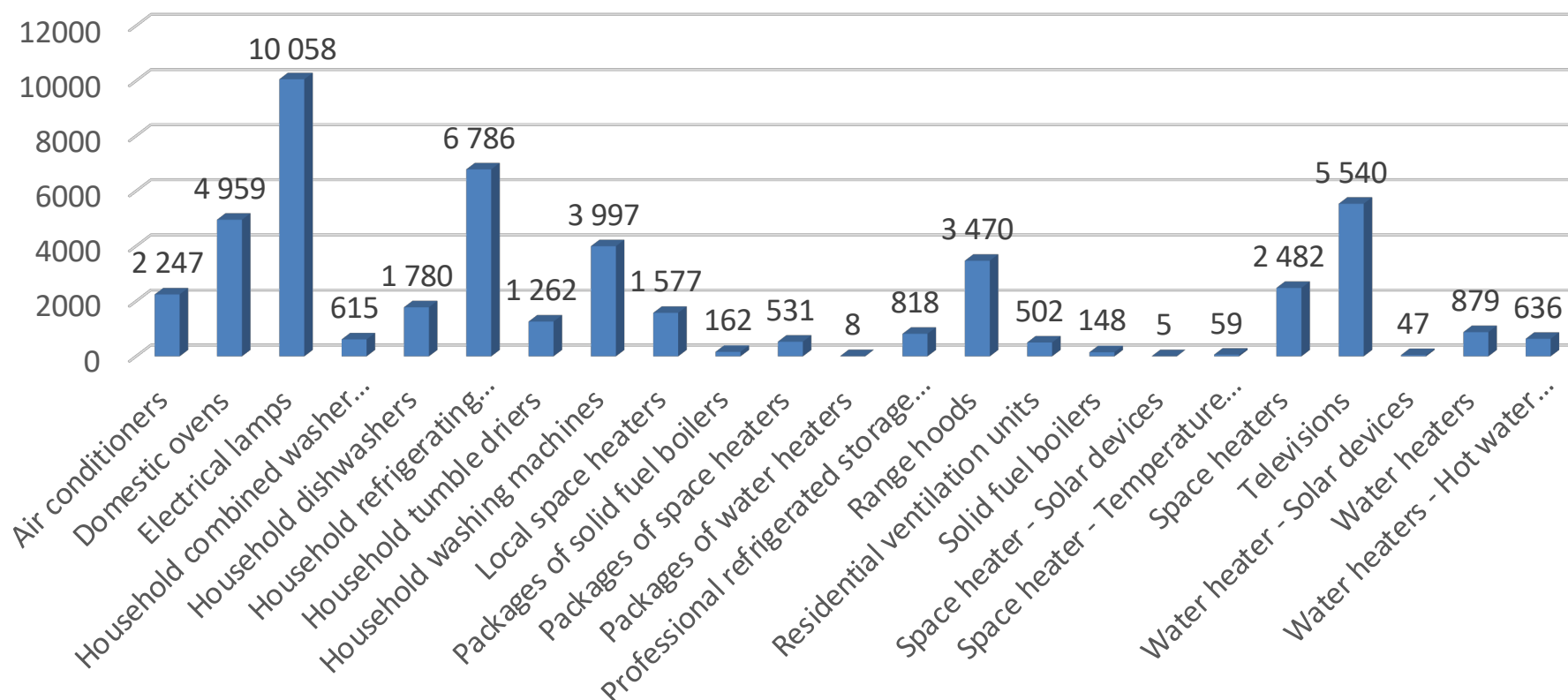
3 June 2019



Current state of implementation

Total models: 48.568

3 June 2019

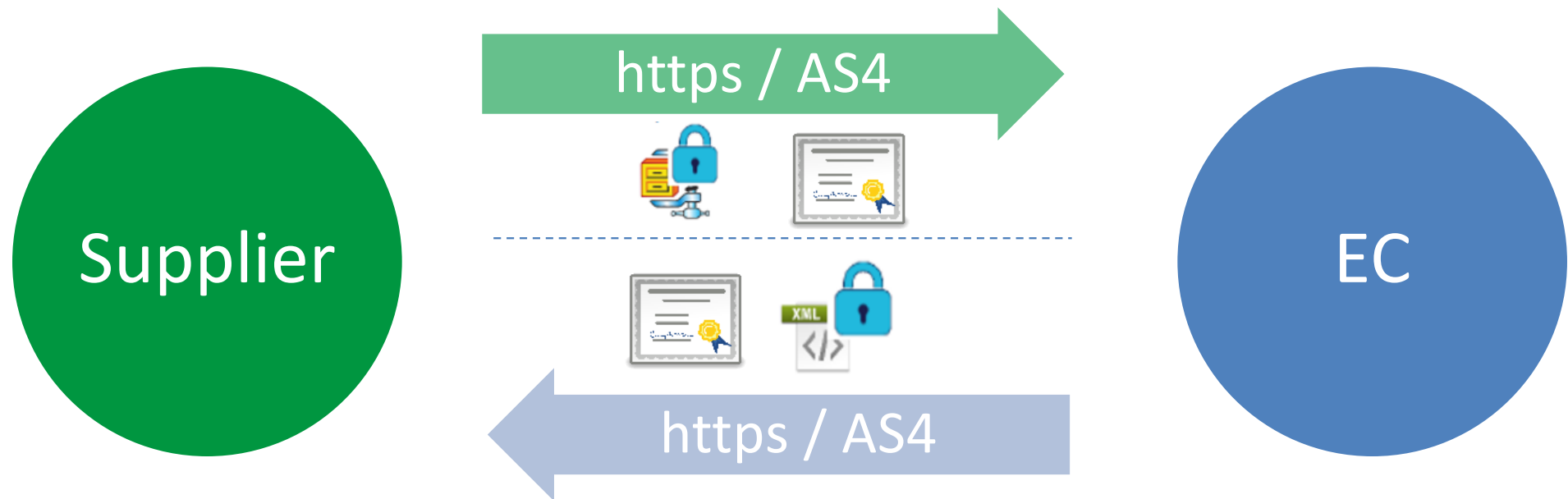


Good to know

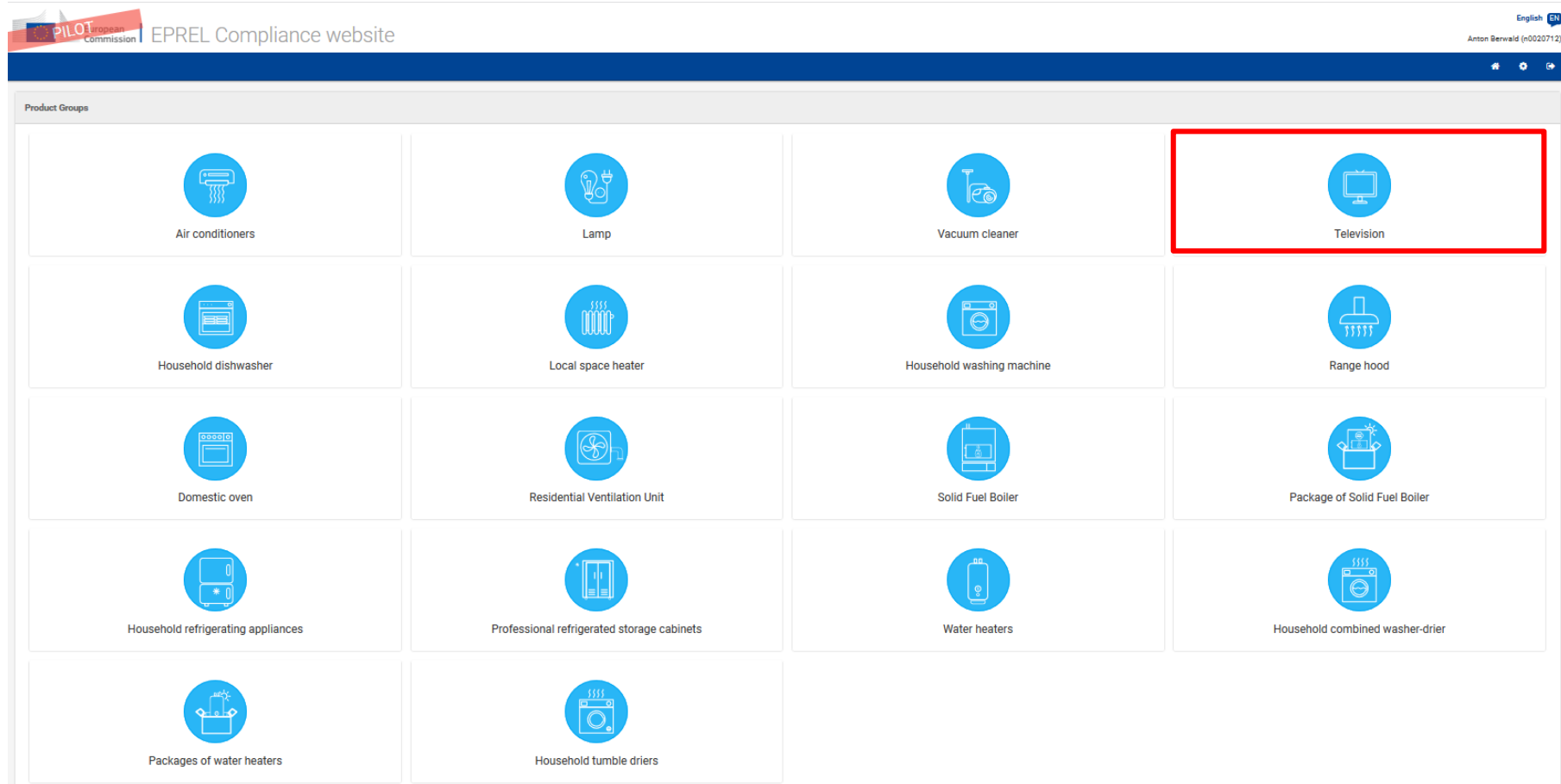
- As soon as changes are made to a product that are relevant to the label or the product data sheet, the product **is considered a new model.**
- The supplier shall indicate in the database **when it no longer places on the market units of a model.**
- After the final unit of a model has been placed on the market, the supplier shall keep the information concerning that model in the compliance part of the product database **for a period of 15 years.**
- The information in the public part of the database **shall not be deleted.**

Date entry in EPREL

- Manually (since 01. January 2019)
- System-to-System (since 01. February 2019, via eDelivery)



EPREL start page



Create a model



Television

Search criteria

Model identifier

Date of placement on the market from

DD/MM/YYYY 

Date of placement on the market to

DD/MM/YYYY 

Energy efficiency class

Search

Product model creation



Product base information

Model identifier *

123456789

Supplier name or trademark *

Fraunhofer TVs

Cancel

Create


Create

New

Equivalent

Class

General information

 **Television**
Delegated Regulation

(EU) 1062/2010

Eprel registration number
Status

236
Incomplete

Model identifier
Supplier name or trademark

123456789
Fraunhofer TVs

Navigation

General Information

Label / Fiche

Technical Documentation

Equivalent Models

Contact

Access Log

Versions

Actions

Delete

Back

General Information

Date of placement on the market

08/11/2018

Date of end of placement on the market

DD/MM/YYYY

EU Eco-label

☐

EU Eco-label registration number

Scale

A++ -> E

Energy efficiency class

A

Screen diagonal (cm)

138

Screen diagonal (inches)

55

On-mode power consumption (W)

111

Annual Energy Consumption (kWh/annual)

154

Standby Power consumption (W)

0.3

Off-mode power consumption (W)

0.3

Screen resolution (Horizontal) (pixel)

3,840

Screen resolution (Vertical) (pixel)

2,160

Visible Switch


☐

If you choose to allow EPREL to generate the labels for this model, you are accepting that the generated label is correct in format and content. Before accepting it, we recommend to generate the label to preview the output and verify them. If you upload a label manually it will be ignored and the generated use

☒ I accept the labels generated by EPREL for this model

Save

Label / Fiche

 **Television**
Delegated Regulation

(EU) 1062/2010

Eprel registration number
Status

236
Incomplete

Model identifier
Supplier name or trade name

Navigation

General Information

Label / Fiche

Technical Documentation

Equivalent Models

Contact

Access Log

Versions

Actions

Delete

Back

Label / Fiche

Label generation

You have chosen to allow EPREL to generate the label, if you upload a label will be ignored.

Generate Label

Supplier Label

Valid file types : pdf, jpeg, tiff, png and svg

Drop your supplier label here

Browse

Upload Label

Product information sheet generation

Select one or more languages for the product information sheet generation (by default only your language will be used)

Languages availables

☐ Bulgarian (BG)

☐ Czech (CS)

☐ Danish (DA)

☐ German (DE)

☐ Estonian (ET)

☐ Greek (EL)

☒ English (EN)

☐ Spanish (ES)

☐ French (FR)

☐ Irish (GA)

☐ Lithuanian (LT)

☐ Hungarian (HU)

☐ Maltese (MT)

☐ Dutch (NL)

☐ Polish (PL)

☐ Portuguese (PT)


☐ Romanian (RO)

☐ Slovak (SK)

☐ Slovenian (SL)

☐

Download

 **ENERG**

Y IJA
IE IA


123456789

Fraunhofer
TVs

A++
A+
A
B
C
D
E


A

ENERGIA · ЕНЕРГИЯ
ΕΝΕΡΓΕΙΑ · ENERGIJA
ENERGY · ENERGIE
ENERGI

 **111**
Watt


154
kWh/annum

138
cm

 **55**
inch

2010/1062 - 2017

Label / Fiche

**Television**
Delegated Regulation

(EU) 1062/2010

Eprel registration number
Status

236
Incomplete

Model identifier
Supplier name or trademark

123456789
Fraunhofer TVs

Navigation

General Information

Label / Fiche

Technical Documentation

Equivalent Models

Contact

Access Log

Versions

Actions

Delete Back

Label / Fiche

Label generation

You have chosen to allow EPREL to generate the label, if you upload a label v

Generate Label

Supplier Label

Valid file types : pdf, jpeg, tiff, png and svg

Drop your supplier label here **Browse**

Upload Label

Product information sheet generation

Select one or more languages for the product information sheet generation (by default all languages are selected)

Languages availables

☐ Bulgarian (BG) ☐ Czech (CS) ☐ Danish (DA) ☐ German (DE) ☐ English (EN) ☐ French (FR) ☐ Italian (IT) ☐ Japanese (JP) ☐ Korean (KR) ☐ Lithuanian (LT) ☐ Hungarian (HU) ☐ Maltese (MT) ☐ Dutch (NL) ☐ Polish (PL) ☐ Portuguese (PT) ☐ Romanian (RO) ☐ Slovenian (SI) ☐ Spanish (ES) ☐ Swedish (SE) ☐ Turkish (TR)


Download

Product Information Sheet

Delegated Regulation (EU) 1062/2010

Supplier name or trademark	Fraunhofer TVs
Model identifier	123456789
Energy Efficiency Class	A
Screen diagonal	138 cm
Screen diagonal	55 inches
On-mode power consumption	111 W
Annual energy consumption	Energy consumption 154 kWh per year, based on the power consumption of the television operating 4 hours per day for 365 days. The actual energy consumption will depend on how the television is used.
Standby power consumption	0.3 W
Off-mode power consumption	0.3 W
Screen resolution (horizontal x vertical)	3840 X 2160 pixels

Technical documentation

**Television**
Delegated Regulation

(EU) 1062/2010

Eprel registration number
Status

236
Incomplete

Model identifier
Supplier name or trademark

123456789
Fraunhofer TVs

Navigation

- General Information
- Label / Fiche
- Technical Documentation**
- Equivalent Models
- Contact
- Access Log
- Versions

Actions

Delete

Back

Technical Documentation

a

General description

b

Reference to harmonised standards

c

Specific precautions

d

Measured technical parameters

e

Calculations

f

Testing conditions

g

Additional part

Technical Documentation: Upload Form

Technical Part Types*

☐ General description

☐ Reference to harmonised standards

☐ Specific precautions

☐ Measured technical parameters

☐ Calculations

☐ Testing conditions

☐ Additional part

Language*

Select a language

Title*

Technical documentation : file upload

Upload mode :

Normal upload

Encrypted upload

Drop your technical file here

Browse

Add


Close

Uploaded Date

www.machts-effizient.d

23

Technical documentation

**Television**
Delegated Regulation (EU) 1062/2010
Eprel registration number 236
Status **Incomplete**
Model identifier 123456789
Supplier name or trademark Fraunhofer TVs

Navigation

- General Information
- Label / Fiche
- Technical Documentation**
- Equivalent Models
- Contact
- Access Log
- Versions

Technical Documentation Add

a General description

b Reference to harmonised standards

c Specific precautions

d Measured technical parameters

e Calculations

f Testing conditions

g Additional part

Own files

Title	Language	a	b	c	d	e	f	g	Filename	Uploaded Date	
General description	DE								label[1].pdf	06/11/2018	<div></div>

Actions

Delete Back

As soon as all fields are marked in **GREEN**, the model is complete

Contact



Television

Delegated Regulation

(EU) 1062/2010

Eprel registration number
Status

236
Incomplete

Model identifier
Supplier name or trademark

123456789
Fraunhofer TVs

Navigation

[General Information](#)
[Label / Fiche](#)
[Technical Documentation](#)
[Equivalent Models](#)
[Contact](#)
[Access Log](#)
[Versions](#)

Actions

[Delete](#) [Back](#)

Contact

Name *

Phone

Email *

Detailed address

Single field address

Street

Street number

Postal code

City

Country

EPREL Forum

- Website: <https://energy-label.ec.europa.eu>
- Contact: ENER-EPREL-HELPDESK@ec.europa.eu
- Documentation:
 - [EPREL Exchange Model Documentation v2.4.1](#)
 - [eDelivery \(system-to-system\)](#)
 - [EPREL Guidelines](#)
 - [EPREL Compliance Site Description](#)
 - [EPREL Compliance Site Prototypes](#)
- Q&A
 - [General aspects](#)
 - [Model](#)

Outlook 2019

#	Function
Product registry	
1	Other model identifiers (EAN)
2	Countries of placement on the market
3	Notifications system
4	Sub-organisations
5	UI complex validations (coherence between field values)
6	Rescaling
Compliance part	
1	Search Page
2	Improved searches
3	Link to ICSMS
Public part	
1	Creation of open data portal
2	Publication of published model versions to open data portal
3	Ports/interfaces

Preliminary conclusion

- Manual data entry allows for compliance since January 2019
 - Possibly time-consuming (depending on the product portfolio)
 - Error-prone (so far no plausibility checks)
- System-to-System data entry possible since February (currently little used)
 - Complex system can lead to implementation problems
 - Requires a trial and debug phase in the Acceptance environment
- According to the EC so far only a few reports from SMEs
- Market surveillance authorities expected to use EPREL from Mid-June 2019 (introduction in three phases)
- Third party / public may expect to use EPREL from August 2019

Q & A

Contact



Thank you for your attention!

www.machts-effizient.de/ntri

anton.berwald@izm.fraunhofer.de



On behalf of the German Federal Ministry
for Economic Affairs and Energy

www.machts-effizient.de/ntri

Annex



[Start Demo](#)