

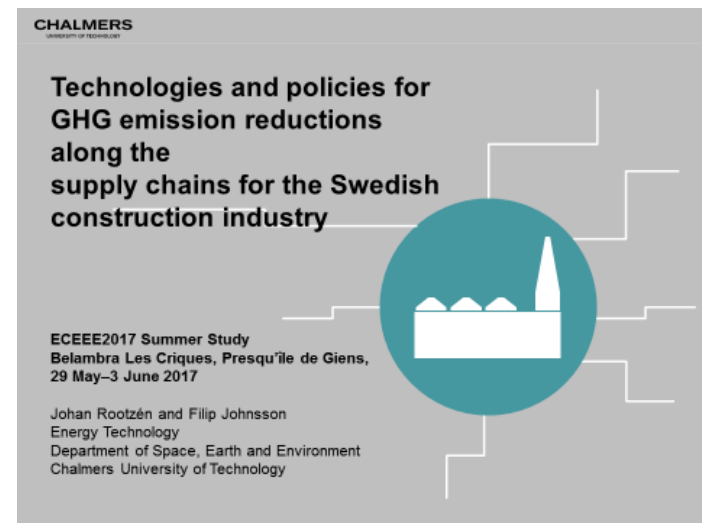
# Panel 6

David Weatherall

Jan Steinbach

# proposal for a new green construction fund has been developed in consultation

*Johan Rootzén*



# High energy bills for poor households is still treated as a social problem rather than an EE problem

*Jose Antonio Ordonez*

---

ECEEE SUMMER STUDY 2017 - 6-383-17 JOSE ANTONIO ORDONEZ

*Jose Antonio Ordonez (M.Sc.)  
Fraunhofer Institut for System and Innovation Research (ISI)  
Karlsruhe, Germany*

---



**A blind spot of European policy? Energy efficiency policies for low-income households**

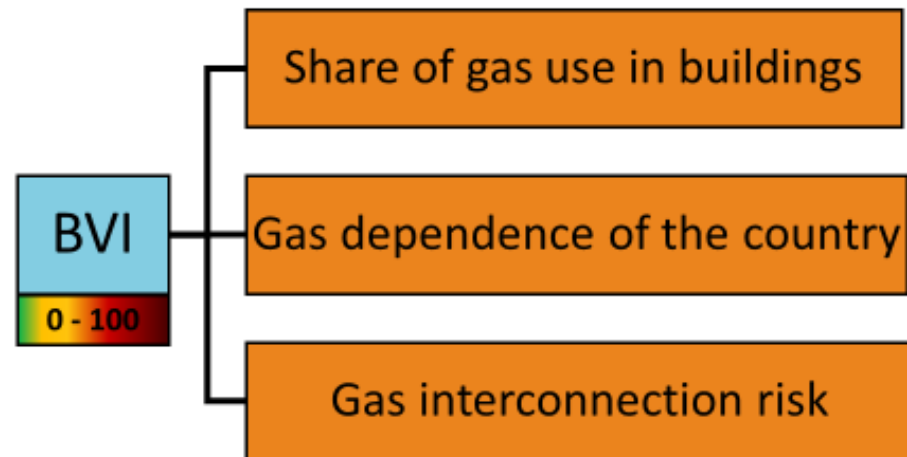
Picture Source: halkidkiproperties.com

© Fraunhofer ISI

# building stock vulnerability index shows a critical level for Hungary and Slovakia

*Maarten De Groot*

BPIE's Building Stock Vulnerability Indicator



$$BVI = (B_{gas}/B_{nrg}) * G_{depend} * I.Risk * 100$$

# Shopping malls have a 4.4% renovation rate but split incentive

*Agne Toleikyte*



CommONEnergy

European shopping center building stock – a pathway towards lower energy consumption



Agne Toleikyte  
TU Wien  
Energy Economics Group (EEG)  
02/06/2017  
[www.eeg.tuwien.ac.at](http://www.eeg.tuwien.ac.at)  
[toleikyte@eeg.tuwien.ac.at](mailto:toleikyte@eeg.tuwien.ac.at)



TECHNISCHE  
UNIVERSITÄT  
WIEN  
Vienna University of Technology



energy  
economics  
group



policies that incentives action on the parts of heritage buildings

*Pablo Villarejo Fernández*

UNIVERSIDAD POLITÉCNICA DE MADRID  
CAMPUS DE EXCELENCIA INTERNACIONAL

Universidad Politécnica de Madrid  
Escuela Técnica Superior de Arquitectura

**Heritage buildings are not necessarily old and quite relevant...**



*Fiona Brocklehurst*

What can we say?



*Mariangiola Fabbri*

---

## What is a Building Renovation Passport?



**Building Renovation Passport potential tool to deliver (staged) deep renovation**  
Three case studies: Belgium( Flanders), France and Germany

---



paying half the value of their home for retrofit makes people angry

*David Weatherall*

The Oxford Tower Blocks



# China is moving to an outcome-based building code

*Wei Feng*



# Property Transfer Tax reform

*Jan Rosenow*



## 4 bedroom end of terrace house for sale

Iffley Fields, Oxford

Guide price

**£1,500,000**



### Benefits

- \* 65% less stamp duty to pay
- \* Super insulated for warm winters and cool summers
- \* No drafts or cold surfaces
- \* Improved air quality
- \* Outperforms UK building regulations
- \* Low energy LED lighting
- \* Minimal heating requirements due to super-efficient building envelope and insulation.

many deep retrofits in office buildings are not commercially feasible

*Jan W. Bleyl*

but:

quantifying wider benefits swings the business case

---

**Building Deep Energy Retrofit:  
Using Dynamic Cash Flow Analysis  
and Multiple Benefits  
to Convince Investors**

Jan W. Bleyl (Austria), Markus Bareit (Switzerland), Miguel A. Casas,  
Johan Coolen, Benjamin De Bruyn (Belgium), Albert Hulshoff  
(Netherlands), Sarah Mitchell & Mark Robertson (Canada)

# Never buy a heat pump with discount, you pay more

*Dominique Osso*



## THE STRUCTURING OF AIR SOURCE HEAT PUMPS' PRICES IN A RETROFITTING RESIDENTIAL BUILDINGS MARKET: WHAT DID I PAY FOR?

D.Osso, S.Nösperger, R.Raynaud,  
M-H.Laurent, C.Grandclément, A.Tricoire

ECREE Summer Study - June 2017

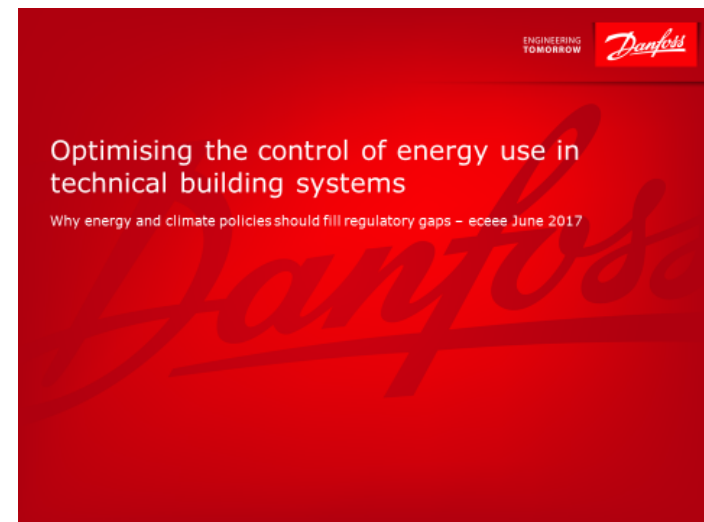


This work is part of the research programme PROFIL which is supported by the French national energy agency ADEME (grant number 131000040). The sole responsibility for the content of this publication lies with the authors. It does not necessarily reflect the opinion of their affiliations.



Optimising technical building systems can save up to  
156 Mt CO2 until 2030

*Helge Schramm*



final energy demand for heating can at the most be reduced by approx. 65%

*Veit Bürger*

www.oeko.de



### German *Energiewende* – Different visions for a (nearly) climate neutral building sector in 2050

eceee summer study 2017  
Panel 6: buildings policies, directives and programmes  
30.05.2017

Dr. Veit Bürger, Öko-Institut e.V.





*Carine Sebi*



## Policy Strategies for Achieving Large Long-Term Savings from Retrofitting Existing Buildings

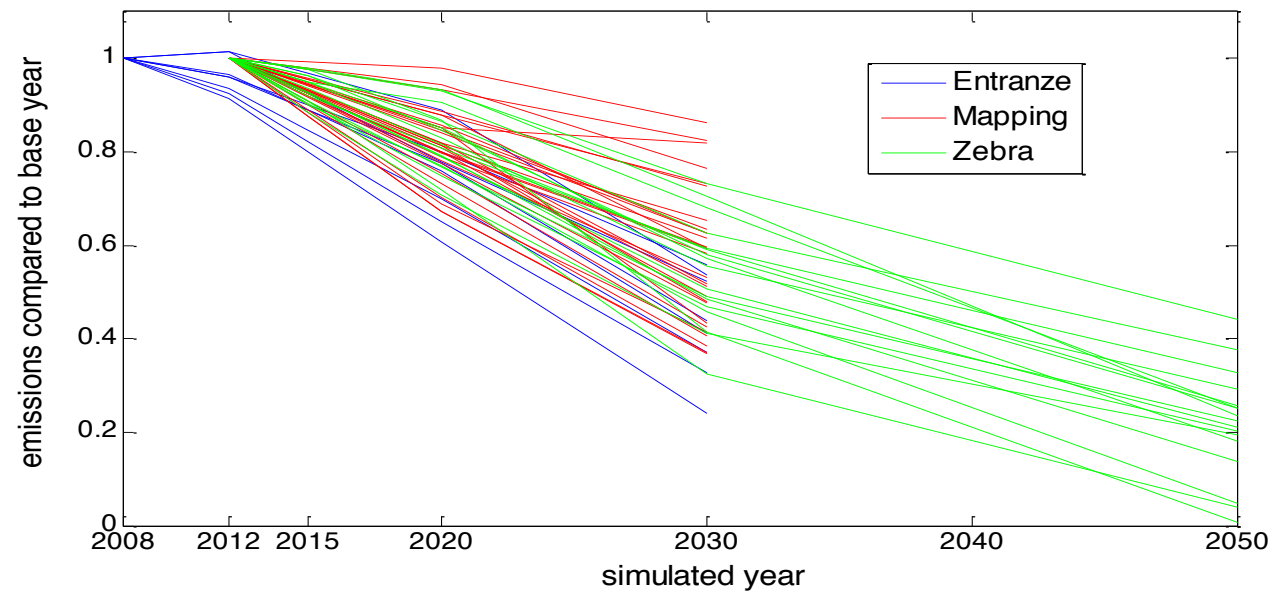
- Carine Sebi - Enerdata
- Steve Nadel - ACEEE
- Barbara Schломann - Fraunhofer ISI
- Jan Steinbach - Fraunhofer ISI



ECEEE summer study 2017 - 30th May

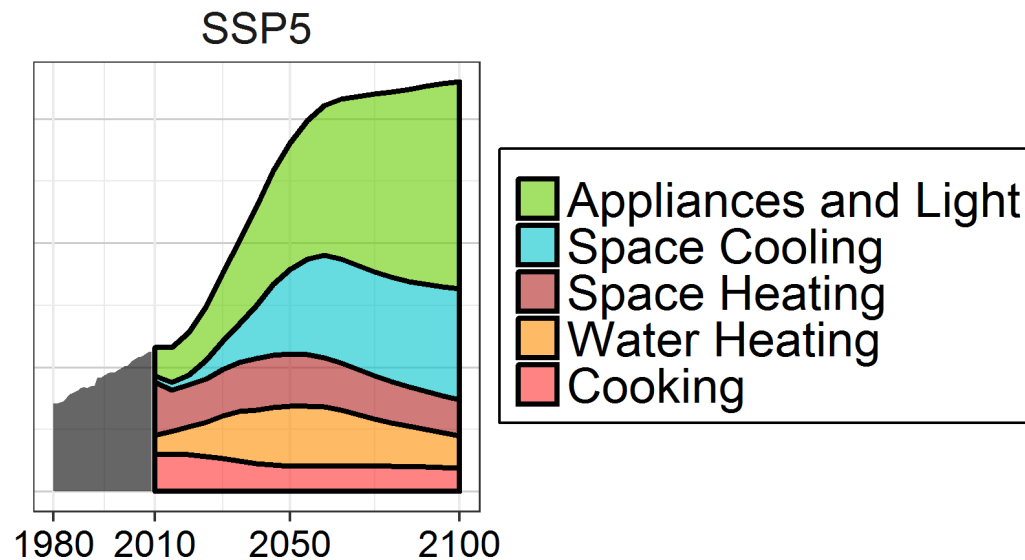
# Analysis of **GHG-emission reduction** in a broad range of scenarios

*Lukas Kranzl*



# Appliances, Lighting and Space Cooling will outbalance Heat energy services

*Antoine Levesque*



# Best Tweet

Poor households, rich presentation – breaking out of the fuel poverty vicious cycle

@NoamBergman